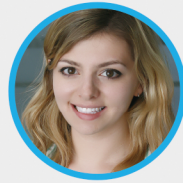


BEYOND® Power Whitening is recognized as the safest and most effective way to whiten your teeth.



Over **2,850,000** smiles whitened worldwide!

beyond® II Ultra
Whitening Accelerator



Introducing your solution for a bright, white, confident smile.

BEYOND® International is in the business of making people smile with confidence. Whether you have a big job interview, graduation ceremony, wedding, or event coming up - or you just want to put your best face forward everyday - having shiny, white teeth will restore your confidence in letting the world see your beautiful smile.

The BEYOND® II Ultra Whitening Accelerator features a unique combination of high intensity LED light coupled with patent-pending ultrasound. When used with our proprietary whitening gel, this promotes superior shiny white results with a reduced treatment time when compared to other systems.

As a global leader in the design and manufacture of professional aesthetic dentistry products, BEYOND® is dedicated to developing the safest and most advanced technologies for power teeth whitening.

Enjoy instant, dramatic results and increased comfort and safety with our 30 minute treatment. Remove years of stains in one easy treatment and see why thousands of satisfied dentists and patients worldwide are talking about this exciting treatment from BEYOND®!

Professional In-Office Whitening Treatment

Discover your Smile Potential



BEYOND® Toothpaste Rose Mint & Matcha



Think Fresh, Think Nature!

- The extract made from placenta extracted from damask roses is incorporated into our toothpaste to give your brushing a lavish finish.
- Rose Essential Oil provides gentle care for the gums, ensuring they remain soothed and healthy.
- Guarantees long-lasting fresh breath for all-day freshness.
- Our unique formula leaves teeth shiny and white with powerful whitening agents to dissolve difficult-to-remove surface stains.
- Premium ingredients such as matcha green tea powder and tea tree oil work in tandem to provide a botanical freshness to compliment your bright, white smile.
- Matcha green tea powder: The earthy and bitter notes of matcha provide a long-lasting herbal aroma to refresh your day.
- Tea tree oil: This essential oil helps the toothpaste permeate your mouth and increases the longevity of its freshness.
- Calcium peroxide aids in dissolving difficult-to-remove surface stains.

BEYOND® CoreWhite® Take-Home Whitening Kit



Gentle 6% hydrogen peroxide (H₂O₂) formula guarantees a beautiful white smile. Offered through dental offices, the CoreWhite take-home tray teeth whitening system provides professional results from the comfort of your home for only 30 minutes a day. This kit includes material to make custom trays, and a handy carrying case with bag. A great option to have your teeth whitened in a simple, quick, and inexpensive manner.

- 30 minutes a day for 14 days – no messy overnight whitening
- Visibly whiter teeth in five days
- Gentle hydrogen peroxide formula minimizes risk of sensitivity (6% H₂O₂ gel)
- EVA material included for a comfortable customized tray
- Refill Kits also available

Available in 2 flavors: **Mint and Orange.**